

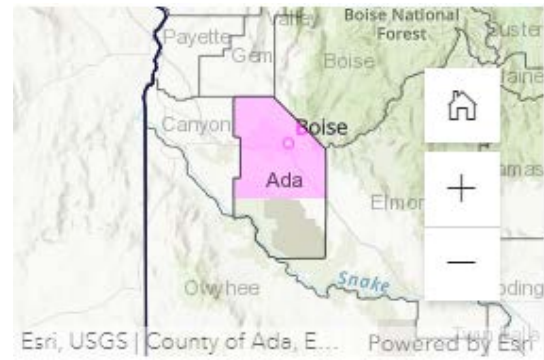


# Northern Ada County Carbon Monoxide Limited Maintenance Plan Revision

Removal of Inspection and Maintenance Program

## Summary of Proposed Revision

The Idaho Department of Environmental Quality (DEQ) is submitting a state implementation plan revision to the US Environmental Protection Agency (EPA). In this submittal, DEQ is proposing to remove the vehicle inspection and maintenance program (I/M) from the Northern Ada County Carbon Monoxide (CO) Limited Maintenance Plan (LMP).



Northern Ada County Carbon Monoxide Maintenance Area

### ***What is in this document?***

DEQ's analysis of air quality monitoring data, trends, and emission projections demonstrates that removing the I/M program from the Northern Ada County CO LMP will not interfere with any Clean Air Act § 110(I) requirements:

- The area is currently meeting the national health-based standards.
- The area will continue to meet the national health-based standards with the removal of the I/M program.
- The removal of the I/M program will not impact any other nonattainment areas.

### ***What is a Vehicle Inspection and Maintenance Program?***

The I/M program requires emissions testing every other year for vehicles that meet certain requirements. Ada County and the cities of Meridian, Boise, and Eagle have operated the I/M program since 1984, covering all cities, except Kuna, and unincorporated parts of the county. This program is managed by the Air Quality Board and follows the requirements in [local ordinances](#). The Air Quality Board implements the vehicle I/M program to comply with the Northern Ada County CO LMP.

### ***Why is DEQ proposing to remove the federal requirements for the Vehicle Inspection and Maintenance Program?***

The I/M program is not as effective as it once was due to vehicle turnover and much stricter federal vehicle emissions standards. DEQ's modeling shows if the I/M program is removed, vehicle emissions are projected to continue to decrease. Even with the Treasure Valley's recent growth, vehicles are cleaner, so the I/M program has minimal impact to improved air quality.

### **What is the Current Air Quality in the Area**

Northern Ada County is currently meeting all the national health-based standards for carbon monoxide, ozone, particulate matter, sulfur dioxide, and nitrous oxides. However, the area still experiences pollution from vehicles, wildfires, industry, residential wood heating, open burning, agricultural activities, and other sources. Summer ozone and winter inversions are still an issue in the Treasure Valley. DEQ will continue to work with communities to protect and improve air quality through monitoring, use of voluntary programs, and outreach. [Find out how you can improve the air quality in your area.](#)

### **What do I really need to know about this proposed revision?**

- DEQ proposes to remove the federal requirement for an I/M program in Northern Ada County. If approved, local governments may elect to keep or remove their I/M programs.
- CO concentrations in Ada County have dropped dramatically since the 1970s initially due to the I/M program and recently due to stricter federal vehicle emissions standards.
- This revision only addresses the I/M program incorporated into Idaho’s state implementation plan through the Northern Ada County CO LMP and does not include the Canyon County or City of Kuna I/M programs.

### **Where can I find more information?**

For technical assistance or questions concerning this document, please contact

- David Luft (208) 373-0201 or [david.luft@deq.idaho.gov](mailto:david.luft@deq.idaho.gov)
- [Northern Ada County Carbon Monoxide Limited Maintenance Plan](#)
- [Air Quality Board \(emissionstest.org\)](#)

**HOW YOU CAN REDUCE VEHICLE EMISSIONS**

**MAINTAIN YOUR VEHICLE**  
Repair your vehicle when the check engine light is on. The check engine light indicates that your vehicle has a problem that could decrease the vehicle's efficiency and increase the pollution it emits.

**GET REGULAR TUNE UPS**  
Vehicles with worn spark plugs or clogged fuel or air filters do not run efficiently and emit more pollution.

**KEEP YOUR TIRES INFLATED AND WHEELS ALLIGNED**  
This reduces drag on the road. Gas mileage drops 1% for every pound below the recommended level of pressure.

**DRIVE LESS**  
Ride the bus, carpool, walk or bike to reduce the number of cars on the road. Organize a carpool at work!

**AVOID PEAK TRAFFIC HOURS**  
Avoiding stop and go traffic reduces vehicle emissions.

**AVOID CARRYING EXTRA ITEMS**  
If you do need to carry items, put them inside the car instead of on a roof rack to reduce drag.

**DON'T IDLE**  
Restarting a warm engine takes less fuel than running it for 30 seconds.

**TURN OFF THAT AIR CONDITIONER**  
Air conditioners can reduce your gas mileage by 20%.

**FUEL UP IN THE EVENING ON SUMMER DAYS**  
During hot summer months, fill your gas in the evenings to reduce volatile organic compounds that can contribute to ozone formation.

## How can I make a comment?

Public comments are one way Idahoans can support informed decision-making. Comments must be received by **midnight on December 5, 2022**.

The public comment period is from **November 3, 2022–December 5, 2022**. During this time, DEQ welcomes comments on the proposed plan revision. DEQ will hold a public hearing on **December 5, 2022, from 6:00 to 7:00 p.m. MST** to take verbal comments.

### *Ways to provide your comments*

#### Written

- Online—Provide your written comment online at any time within the public comment period DEQ’s [Public Comment Opportunities](#) page
- Mail—Attn: David Luft 1410 N. Hilton Street, Boise, ID 83706



#### Verbal at public hearing

- In person—1410 N. Hilton Street, Boise, ID 83706
- Virtually—Click here for link to

DEQ will not respond to comments unrelated to or outside of the scope of this revision. To provide effective comments, we encourage you to follow these tips:

- Reference the Northern Ada County CO LMP revision.
- Ensure your comments address the technical and regulatory analyses of removing the I/M program from the Northern Ada County CO LMP.
- Address the environmental impacts of removing the I/M program from the Northern Ada County CO LMP.
- Use examples and provide supporting materials when appropriate.
- Offer suggestions to address a concern or solve a problem, such as timing or design.

**Accessibility Services:** The Idaho Department of Environmental Quality will provide reasonable language access services and/or disability services for documents at no charge. To request an accommodation under Title VI of the Civil Rights Act of 1964 or Americans with Disabilities Act, contact DEQ’s nondiscrimination coordinator at (208) 373-0271 or [accessibility@deq.idaho.gov](mailto:accessibility@deq.idaho.gov). Para obtener información en español, visite <https://www.deq.idaho.gov/about-us/accessibility/>.