

Idaho Department of Environmental Quality

Revision of Idaho's
Human Health Criteria for Arsenic
Docket No. 58-0102-1801

April 22, 2021

Jason Pappani



Outline

- Review
- Comments
- Frequency and Duration
- Arcadis presentation
- Rule
- Tissue Monitoring Discussion
- Next Steps

1992	1995	1999	2010	2016	2018	2023
National Toxics Rule	Idaho Revises	Idaho Adopts MCL	Idaho Revises to new MCL	EPA reconsiders, disapproves	Idaho initiates rulemaking, EPA and NWEA modify consent decree	New state or Federal Criteria



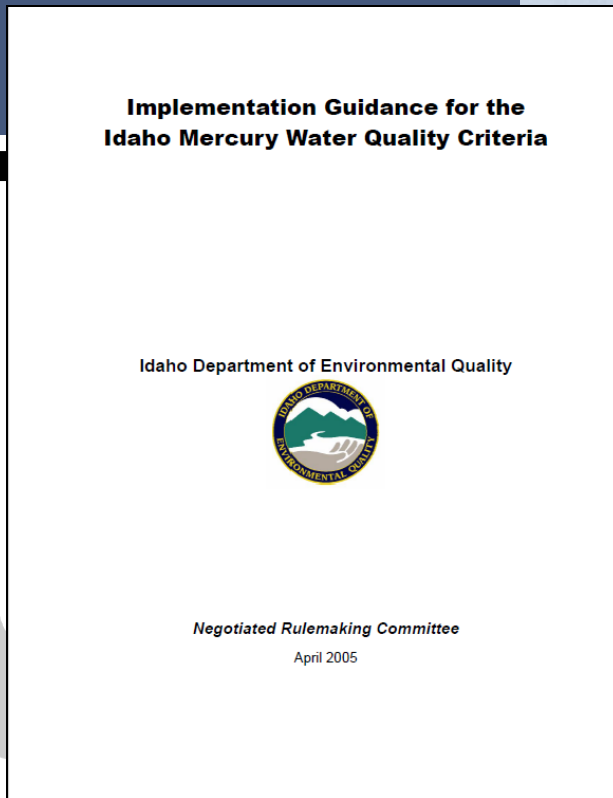
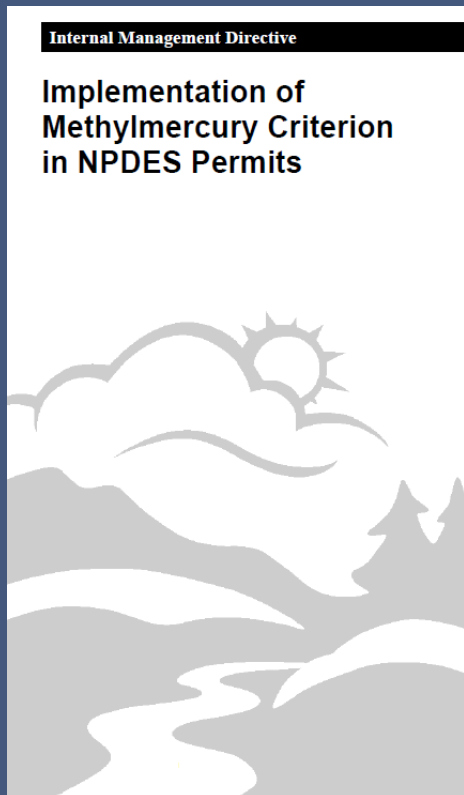
Preliminary Draft Rule

Exposure	Criterion
Fish Only (Recreation)	8 µg/kg
Fish muscle (fillet) tissue: 8 µg/kg on a wet-weight basis, based on an average or composite of a minimum of five (5) individual fish of the same species, where the smallest individual is no less than seventy-five percent (75%) of the total length (size) of the largest individual.	
Fish + Water (Domestic Water Supply)	*
Human health criteria for Water & Fish exposure to inorganic arsenic are attained if fish tissue concentrations comply with the Fish Only criterion and water column concentrations meet the maximum contaminant level for inorganic arsenic provided in IDAPA 58.01.08, "Idaho Rules for Public Drinking Water Systems."	

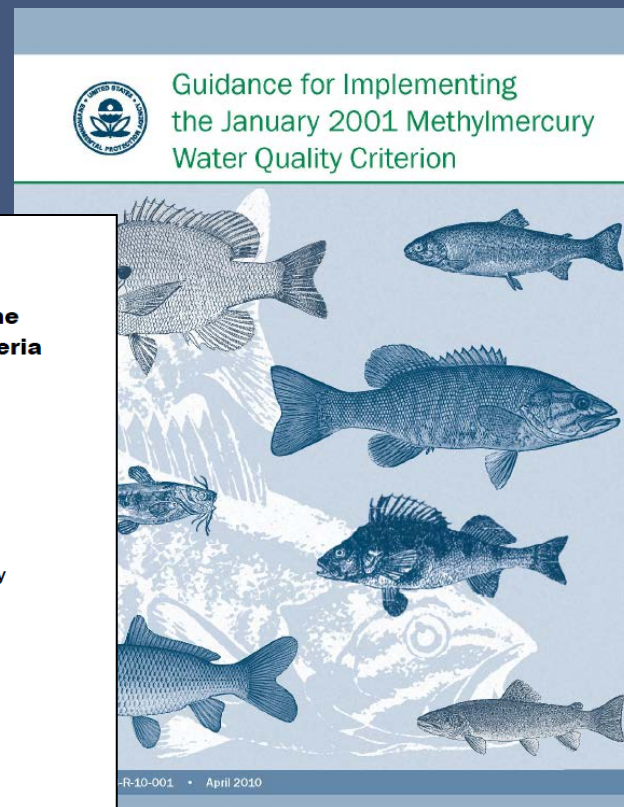
Comments Received



Guidance Documents



Last Updated: 01/08/2013
By: Spencer Sabahy
EPCQ-12-001-1-5d
Web Page 12-001-011



Guidance Documents

DRAFT Guidance for the Collection of Fish Tissue and/or Water Column Data for Implementation of Indiana's Selenium Chronic Aquatic Life Criteria

Indiana Department of Environmental Management– Office of Water Quality
September 2020



Office of Water
EPA 820-F-16-007
September 2016

Technical Support for Fish Tissue Monitoring for Implementation of EPA's 2016 Selenium Criterion

Draft

Frequency and Duration



Arcadis

Draft Rule

Exposure	Criterion
Fish Only (Recreation)	8 µg/kg
Fish muscle (fillet) tissue: 8 µg/kg on a wet-weight basis, based on an average or composite of a minimum of five (5) individual fish of the same species, where the smallest individual is no less than seventy-five percent (75%) of the total length (size) of the largest individual.	
Fish + Water (Domestic Water Supply)	*
Human health criteria for Water & Fish exposure to inorganic arsenic are attained if fish tissue concentrations comply with the Fish Only criterion and water column concentrations meet the maximum contaminant level for inorganic arsenic provided in IDAPA 58.01.08, "Idaho Rules for Public Drinking Water Systems."	

Tissue Monitoring



Tissue Monitoring

	Per Sample
Composite Tissue Sample (iAs)	\$315
Water Sample (iAs)	\$120
Man hours (estimate 18 * \$20/hr)	\$360
Shipping and Supplies	\$150

Next Steps

- Comments Due: May 14, 2021
- Next Meeting:
 - Discuss implementation issues and propose guidance outline



Questions?

