

Attachment 3 Security Procedures Table of Contents

F.0 Procedure to Prevent Hazards	2
F.1 Security	2
F.1.a Security Procedures and Equipment	2
F.1.a.(1) Surveillance System.....	2
F.1.a.(2) Barrier.....	2
F.1.a.(3) Means to Control Entry	2
F.1.a.(4) Warning Signs	3
F.1.b Waiver.....	3

F.0 Procedure to Prevent Hazards

The information provided in this Section is submitted in accordance with the requirements of IDAPA 58.01.05.012 (40 CFR 270.14) and applicable sections of IDAPA 58.01.05.008 (40 CFR 264.14, 264.15, 264.17, 264.174, 264.194, and 264.226).

The following subject areas will be addressed in this Section:

- General security provisions
- Inspection schedule
- Spill prevention and containment
- Prevention of accidental ignition or reaction of ignitable, reactive, or incompatible wastes, as they relate to hazard prevention

Facility security and safety related features, including security fencing and gates, are shown on Drawing Number PRMI-T10.

F.1 Security

In accordance with IDAPA 58.01.05.008 (40 CFR 264.14), USEI makes every effort to prevent the unknowing entry, and to minimize the possibility of unauthorized entry, into the active portions of the facility.

F.1.a Security Procedures and Equipment

The facility has procedures and equipment in place to minimize opportunities for unauthorized entry into the facility. Procedures, including routine safety and security inspections, and equipment consisting of gates and fences are discussed below.

F.1.a.(1) Surveillance System

The facility is completely surrounded by a fence that controls entry to the facility at all times. Therefore, twenty-four hour surveillance is not required.

F.1.a.(2) Barrier

A six (6) foot high chain-link fence completely surrounds the perimeter of the facility. Drawing # PRMI-T10 shows the location of the fencing and gates. This perimeter fence is topped with barbed wire to deter entry over the fence. The fence is monitored by regularly-scheduled inspections, to detect breaches that could allow unauthorized entry as described in paragraph F.2.a.(2).

F.1.a.(3) Means to Control Entry

The facility is equipped with several gates for ingress and egress purposes. During normal operating hours, only the main gate is used for personnel and vehicle access. The other gates are used for other personnel and vehicle access, as necessary. Normal operating hours are from 7:00 a.m. to 5:00 p.m., Monday through Friday, excluding holidays. However, it is not unusual to adjust operating hours depending on waste receipts and available daylight hours and operational requirements.

The main gate is kept in the closed position unless attended by personnel or when a vehicle is entering or exiting the gate. A guard house is located adjacent to the gate within the fenced perimeter. All vehicles

entering the facility through the main gate receive guidance and instruction from personnel at the gate and within the facility. Road signs are also present providing specific instructions to direct traffic to the appropriate facility locations as well as facility traffic regulations.

Alternately, USEI may elect to control gate access during normal working hours by use of a TV-monitored remote control system. An intercom system at the main gate would allow visitors to communicate with facility personnel or security personnel before being granted access to the facility. Through use of this intercom system, facility personnel may instruct visitors regarding where to proceed within the active portion of the facility.

The alternate vehicle access gates are locked except when facility operations require alternative vehicle access (e.g., hauling material from gravel source) or during emergency situations. When used for these occasional purposes, the gates are closed and locked when access through these gate(s) is no longer needed.

The personnel gates are kept locked except for emergency situations as described in the Contingency Plan or when the gate is under observation by personnel. When unlocked during an emergency situation, access through these gates is monitored by facility personnel until relocked.

Currently, USEI maintains 24-hour coverage at the guard shack, however, this level of coverage may be modified, as necessary. Per the requirements of IDAPA 58.01.05.008 (40 CFR 264.14), USEI is required to prevent the unknowing entry, and minimize the possibility of unauthorized entry onto the active portion of the facility. Since USEI maintains a locked facility with a six (6) foot fence, USEI will meet the requirements regardless of whether or not guards are on the facility 24-hours per day.

F.1.a.(4) Warning Signs

Pursuant to IDAPA 58.01.05.008 (40 CFR 264.14), signs stating "Danger — Unauthorized Personnel Keep Out" are posted at all fence gates at intervals of approximately every 300 feet of fence around the facility. These signs are visible from all approach angles, are at least 12 inches by 18 inches in dimension, and are legible from a distance of 25 feet.

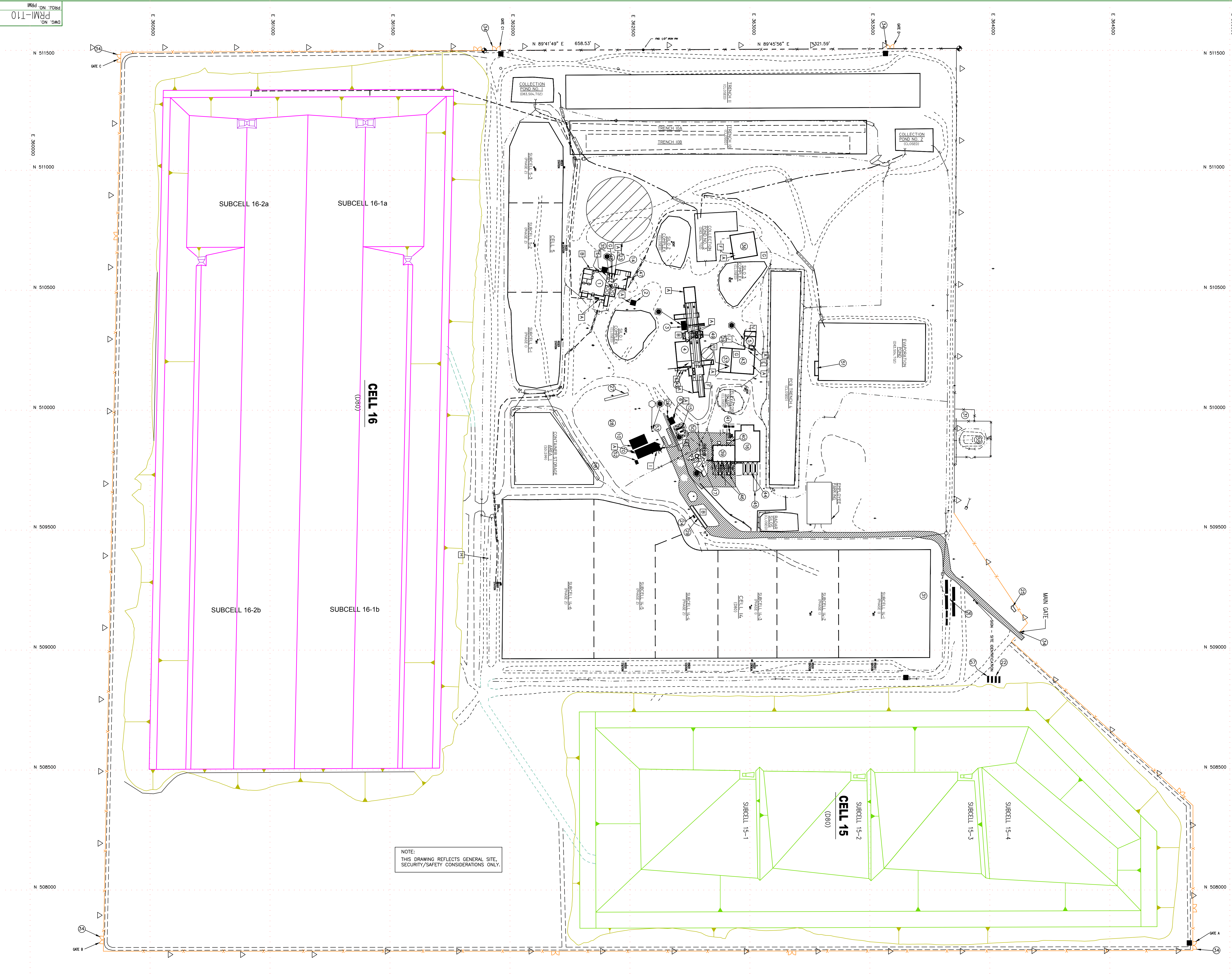
F.1.b Waiver

USEI does not request a waiver of the security procedures and equipment requirements stated in IDAPA 58.01.05.008 (40 CFR Part 264.14(a)(1), (2)).

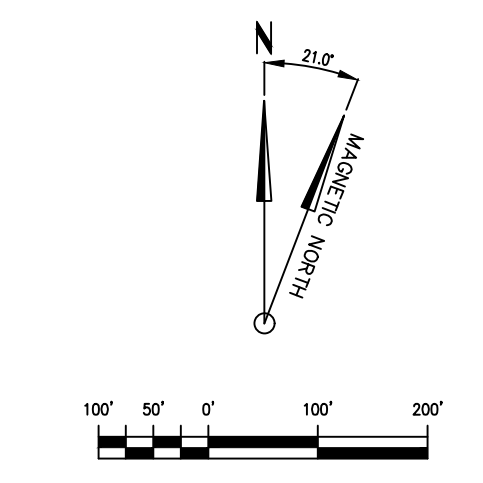
- LEGEND**
- 8" Ø RIB PIN W/ ALUMINUM CAP
 - POWER POLE
 - PAVED ROAD
 - UNIMPROVED ROAD
 - FENCE LINE
 - PROPERTY BOUNDARY
 - RISK UNIT BOUNDARY
 - CULVERT
 - DRAINAGE
 - CARRIER PIPE
 - LEACHATE PIPE W/SLUDGE
 - POND WATER TRANSFER PIPE
 - FACILITY KEY NUMBER
 - POSTED SIGN
"DANGER - UNAUTHORIZED PERSONNEL - KEEP OUT"
 - METAL BOX CONTAINING COMBINATION TO GATE
 - WARNING SIGN
"DANGER - HAZARDOUS AREA"
 - WARNING SIGN
"NO SMOKING, MATCHES OR OPEN LIGHTS"

- FACILITY KEY**
- 1 CONTAINER STORAGE PAD 4
 - 2 COMPRESSION/WC BUILDING
 - 3 STABILIZATION FACILITY OFFICE/OPERATOR LAB
 - 4 STABILIZATION FACILITY
 - 5 PDS PROCESSING BUILDING-OUT OF SERVICE
 - 6 VEHICLE WASH FACILITY
 - 7 "UNDESIGNED"
 - 8 "UNDESIGNED"
 - 9 "UNDESIGNED"
 - 10 MAINTENANCE SHOP
 - 11 "UNDESIGNED"
 - 12 "UNDESIGNED"
 - 13 "UNDESIGNED"
 - 14 PDS # 4 OFFICE
 - 15 FUEL STORAGE TANKS/FUELING STATION
 - 16 CONTAINER BUILDING
 - 17 PUMP HOUSE/WATER STORAGE TANKS
 - 18 COMPRESSED GAS STORAGE AREA
 - 19 "UNDESIGNED"
 - 20 "UNDESIGNED"
 - 21 RECORDS STORAGE BUILDING
 - 22 REAGENT STORAGE
 - 23 SECURITY BUILDING
 - 24 SCALE HOUSE
 - 25 SECURITY BUILDING
 - 26 PROpane TANK
 - 27 SHEDDING PLATFORM
 - 28 STRONG AREA
 - 29 TRUCK SCALE
 - 30 "UNDESIGNED"
 - 31 WEATHER STATION
 - 32 "UNDESIGNED"
 - 33 "UNDESIGNED"
 - 34 EXCAVATION GATES
 - 35 PDS STORAGE TANKS-4 UNITS
 - 36 CONTAINER STORAGE PAD 5
 - 37 PDS #4-HIGH STORAGE BUILDING W/WHIP
 - 38 "UNDESIGNED"
 - 39 STABILIZATION BUILDING-OUT OF SERVICE
 - 40 BIG HOUSE-OUT OF SERVICE
 - 41 HEPA FILTER HOUSE AND FAN-OUT OF SERVICE
 - 42 VEH. TRUCK SCALE
 - 43 CONTAINER STORAGE PAD 7
 - 44 CONTAINER BUILDING TRUCK UNLOADING AREAS 1,2 AND 3-OUT OF SERVICE
 - 45 CONTAINER BUILDING TRUCK UNLOADING BUMP-OUT OF SERVICE
 - 46 STABILIZATION BUILDING TRUCK UNLOADING-OUT OF SERVICE
 - 47 PROCESS PLANT PAD
 - 48 LEACHATE TREATMENT SYSTEM
 - 49 STABILIZATION FACILITY ADDITIVE SLIDS
 - 50 STABILIZATION BUILDING ADDITIVE SLIDS-OUT OF SERVICE
 - 51 EXCAVATION POND LOADING/UNLOADING AREA
 - 52 OFFICE TRAILER SHARTRY TANK
 - 53 LAB WASTE HOLDING TANK
 - 54 "UNDESIGNED"
 - 55 17' Ø GP TST PAD
 - 56 TEMPORARY ADMINISTRATION TRAILERS
 - 57 SAFETY SEA CONTAINER

- SAFETY EQUIPMENT KEY**
- A 20/30 LB FIRE EXTINGUISHER
 - B 125 LB EXTINGUISHER
 - E 15 GAL OIL WASH
 - F EYE WASH STATION
 - G EMERGENCY ASSEMBLY LOCATION
 - H SHED/STORAGE LIGHT - OUT OF SERVICE
 - I SHED ONLY
 - J MOON EXCAVATION LIGHTS - OUT OF SERVICE



NOTE:
 THIS DRAWING REFLECTS GENERAL SITE,
 SECURITY/SAFETY CONSIDERATIONS ONLY.



REV.	BY	DATE	DESCRIPTION	PROJ. MGR.	ENGR.	DATE
C	MM	2/27/19	TEMP OFFICES AND SEA CONTAINERS			
B	MM	2/27/19	CELL 16 MODIFICATIONS			
A	MM	2/27/19	PART B PERMIT RENEWAL APPLICATION			

SITE B GRAND VIEW, IDAHO US EPA ID NO. IDD 073 114 654	
TITLE: FACILITY COMMUNICATION AND EMERGENCY RESPONSE EQUIPMENT PLAN	
DRAWN BY: DATE SCALE: FILE CODE: MM 2/27/19	DWG. NO.: PRM-T10
CHECKED: DATE ENGINEER: DATE MM	PROJ. MGR. DATE APPROVED: DATE PROJ. NO.: PRM